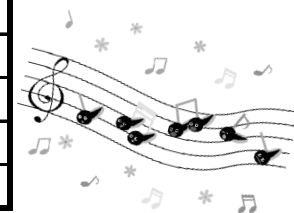


月謝制

| 改定前    | 改定月謝   | 消費税10% | 諸経費 | 月謝合計   |
|--------|--------|--------|-----|--------|
| 4,500  | 4,800  | 480    | 300 | 5,580  |
| 5,000  | 5,300  | 530    | 300 | 6,130  |
| 5,500  | 5,800  | 580    | 300 | 6,680  |
| 6,000  | 6,300  | 630    | 300 | 7,230  |
| 6,500  | 6,800  | 680    | 300 | 7,780  |
| 7,000  | 7,300  | 730    | 300 | 8,330  |
| 7,500  | 7,800  | 780    | 300 | 8,880  |
| 8,000  | 8,300  | 830    | 300 | 9,430  |
| 8,500  | 8,800  | 880    | 300 | 9,980  |
| 9,000  | 9,300  | 930    | 300 | 10,530 |
| 9,500  | 9,800  | 980    | 300 | 11,080 |
| 10,000 | 10,300 | 1,030  | 300 | 11,630 |
| 11,000 | 11,300 | 1,130  | 300 | 12,730 |
| 12,000 | 12,300 | 1,230  | 300 | 13,830 |
| 13,000 | 13,300 | 1,330  | 300 | 14,930 |
| 14,000 | 14,300 | 1,430  | 300 | 16,030 |
| 15,000 | 15,300 | 1,530  | 300 | 17,130 |
| 16,000 | 16,300 | 1,630  | 300 | 18,230 |
| 17,000 | 17,300 | 1,730  | 300 | 19,330 |
| 18,000 | 18,300 | 1,830  | 300 | 20,430 |
| 19,000 | 19,300 | 1,930  | 300 | 21,530 |
| 20,000 | 20,300 | 2,030  | 300 | 22,630 |
| 21,000 | 21,300 | 2,130  | 300 | 23,730 |
| 22,000 | 22,300 | 2,230  | 300 | 24,830 |
| 23,000 | 23,300 | 2,330  | 300 | 25,930 |
| 24,000 | 24,300 | 2,430  | 300 | 27,030 |
| 25,000 | 25,300 | 2,530  | 300 | 28,130 |
| 26,000 | 26,300 | 2,630  | 300 | 29,230 |
| 27,000 | 27,300 | 2,730  | 300 | 30,330 |
| 28,000 | 28,300 | 2,830  | 300 | 31,430 |
| 30,000 | 30,300 | 3,030  | 300 | 33,630 |

単発

| 改定前1回分 | 改定後1回分 | 消費税10% | 諸経費 | 総計    |
|--------|--------|--------|-----|-------|
| 3,000  | 3,200  | 320    | 200 | 3,720 |
| 4,000  | 4,200  | 420    | 200 | 4,820 |
| 4,500  | 4,700  | 470    | 200 | 5,370 |
| 5,000  | 5,200  | 520    | 200 | 5,920 |
| 6,000  | 6,200  | 620    | 200 | 7,020 |
| 7,000  | 7,200  | 720    | 200 | 8,120 |
| 8,000  | 8,200  | 820    | 200 | 9,220 |



チケット制

| 改定前1回分<br>レッスン料 | 改定後<br>1回分レッスン料 | 4回分チケット代 | 消費税10% | 税+経費  | 合計     | 3セット   |
|-----------------|-----------------|----------|--------|-------|--------|--------|
|                 |                 |          | 諸経費    |       |        |        |
| 3,000           | 3,200           | 12,300   | 1,230  | 1,530 | 13,830 | 40,490 |
|                 |                 |          | 300    |       |        |        |
| 3,500           | 3,700           | 14,300   | 1,430  | 1,730 | 16,030 | 47,090 |
|                 |                 |          | 300    |       |        |        |
| 4,000           | 4,200           | 16,300   | 1,630  | 1,930 | 18,230 | 53,690 |
|                 |                 |          | 300    |       |        |        |
| 4,500           | 4,700           | 18,300   | 1,830  | 2,130 | 20,430 | 60,290 |
|                 |                 |          | 300    |       |        |        |
| 5,000           | 5,200           | 20,300   | 2,030  | 2,330 | 22,630 | 66,890 |
|                 |                 |          | 300    |       |        |        |
| 5,500           | 5,700           | 22,300   | 2,230  | 2,530 | 24,830 | 73,490 |
|                 |                 |          | 300    |       |        |        |
| 6,000           | 6,200           | 23,800   | 2,380  | 2,680 | 26,480 | 78,440 |
|                 |                 |          | 300    |       |        |        |
| 7,000           | 7,200           | 27,800   | 2,780  | 3,080 | 30,880 | 91,640 |
|                 |                 |          | 300    |       |        |        |

※購入後のチケットの途中換金は不可。

※3セット(12枚)まとめ購入で、¥1,000引き。(合計×3)－1,000

※未納月謝には3ヶ月目から延滞金10%を加算。

